

Agricultural Incinerators

New & Improved!



Stainless steel stack cap with added material for longer life

New counter-balance arm design and mounting location for greater door strength and smoother operation

New ventilation ports dissipate excess heat during operation

New double wall thickness on side section of chamber top for added strength and longer life

New easier-to-move skid base design for added strength and balance

New lower height for easier loading

Capacities from 200 to 850 pounds (91 to 386 kg)



The Benefits of Chore-Time Incinerators



Efficient Combustion Technology

- Rapid incineration means low fuel consumption
- Thick refractory lining in main chamber retains heat and increases efficiency
- Waste can be destroyed as fast as it accumulates (under normal conditions with a properly sized unit)

Easy to Use

- Timer operation with auto-ignition (no pilots to light)
- Easier loading and ash removal with new lower profile and improved doors
- Single burner requires less maintenance

Biosecure and Sanitary

- Achieve complete disposal of carcasses the first burn – no need to rearrange remains
- Virtually eliminate smoke and odor (optional secondary burner available for use where required by regulation)
- Leaves only sterile white ash and brittle bone fragments

Proven, Quality Incineration Since 1962

- New lower profile and modified base are stronger
 - Constructed of heat-resistant aluminized steel, stainless steel and industrial strength refractory
 - Continuous-welded bottom seams for added durability and no grates to replace

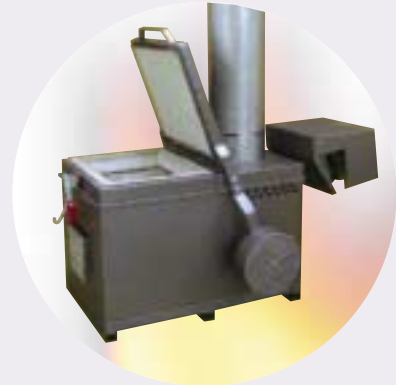
Model A200

Features and Models to Meet Your Incineration Needs



**Model A200
Gas-Fired
Burner Unit**

The Model A850 is designed with large farms in mind.



Low height of chamber and counter-weighted top make loading easy.



The Model A850 features a hinged ash door in the front of the unit for easy clean-out.

Recommended Use Based on Typical Farm Size



	Broilers	Breeders	Turkeys
Model A200 200 pounds (91 kg) capacity 6.3 cubic foot (0.18 m ³) chamber	40,000	30,000	10,000
Model A400 400 pounds (181 kg) capacity 12.0 cubic foot (0.36 m ³) chamber	80,000	60,000	20,000
Model A500 500 pounds (227 kg) capacity 14.7 cubic foot (0.42m ³) chamber	100,000	70,000	25,000
Model A850 850 pounds (386 kg) capacity 26.5 cubic foot (0.75 m ³) chamber	175,000	120,000	42,500

Base the size of your incinerator on the total pounds of loss (expected flock mortality) that will need to be incinerated each day. Plan to operate the incinerator only once per day when the flock is young. Sizing your unit this way builds in expansion capacity as birds grow older and heavier. Two burns per day is considered maximum capacity.

Chore-Time Incinerator Specification Chart

Model Number	A200	A400	A500	A850
CAPACITY				
Waste Chamber Capacity (Type IV Waste - Animals)	200 lbs. (91 kg)	400 lbs. (181 kg)	500 lbs. (227 kg)	850 lbs. (386 kg)
Waste Chamber Volume (Type IV Waste - Animals)	6.3 Ft ³ (0.18 m ³)	12.6 Ft ³ (0.36 m ³)	14.7 Ft ³ (0.42 m ³)	26.5 Ft ³ (0.75 m ³)
OPERATION				
Charging Rate per Charge - Batch Loaded (Typical pathological waste with a BTU/lb. rating of 1000)	200 lbs. (91 kg)	400 lbs. (181 kg)	500 lbs. (227 kg)	850 lbs. (386 kg)
Burn Rate (Per Hour)	45 lbs. (20 kg)	55 lbs. (25 kg)	70 lbs. (32 kg)	90 lbs. (41 kg)
Approx. Time for Complete Burn-Out (Cool down and remove ash before reloading)	4.5 hours	7 hours	7 hours	9 hours
Approx. Amount of Residue (Cool down and remove ash before reloading)	10 lbs. (4.5 kg)	20 lbs. (9 kg)	25 lbs. (11 kg)	42.5 lbs. (19 kg)
Timer Type	12-Hour Manual Timer	12-Hour Manual Timer	12-Hour Manual Timer	12-Hour Manual Timer

DIMENSIONS & WEIGHT				
Outside Dimensions (excluding stack on A200 and A500; excluding arms & burner on A850)				
Width	26 in. (66 cm)	36 in. (91 cm)	34 in. (86 cm)	44.5 in. (113 cm)
Height	32 in. (81 cm)	34 in. (86 cm)	38 in. (97 cm)	45 in. (114 cm)
Length	42 in. (107 cm)	48 in. (122 cm)	60 in. (152 cm)	60 in. (152 cm)
Other Dimensions & Specifications				
Door Opening	18 x 20 in. (46 x 51 cm)	22 x 29 in. (56 x 74 cm)	26 x 30 in. (66 x 76 cm)	21 x 27 in. (53 x 69 cm)
Height to Door Opening	29.5 in. (75 cm)	30.5 in. (77 cm)	35 in. (89 cm)	36 in. (91 cm)
Height to Top of Stack	8 ft. 6 in. (2.6 m)	11 ft. (3.3 m)	14 ft. (4.3 m)	16 ft. (4.8 m)
Minimum Suggested Slab Size without a Shelter (length x width x thickness)	6 ft. x 8 ft. x 4 in. (1.8 m x 2.4 m x 10 cm)	6 ft. x 8 ft. x 4 in. (1.8 m x 2.4 m x 10 cm)	6 ft. x 8 ft. x 4 in. (1.8 m x 2.4 m x 10 cm)	8 ft. x 10 ft. x 4 in. (2.4 m x 3 m x 10 cm)
Approx. Total Weight	1330 lbs. (603 kg)	1969 lbs. (896 kg)	2700 lbs. (1225 kg)	4000 lbs. (1820 kg)
Units per 40-Foot Container	21	12	10	10

STACK INFORMATION				
2-Foot (0.6-m) Stack				
Height		2 ft. (0.6 m)	2 ft. (0.6 m)	2 ft. (0.6 m)
Diameter	Does not apply to this unit	14 in. (36 cm)	14 in. (36 cm)	14 in. (36 cm)
Steel Gauge		14 (1.90 mm)	14 (1.90 mm)	14 (1.90 mm)
Steel Type		Aluminized	Aluminized	Aluminized
Refractory Lined		Yes	Yes	Yes
5-Foot (1.5-m) or 8-Foot (2.4-m) Stack				
Height	5 ft. (1.5 m)	5 ft. (1.5 m)	8 ft. (2.4 m)	8 ft. (2.4 m)
Diameter	12 in. (30.5 cm)	12 in. (30.5 cm)	12 in. (30.5 cm)	12 in. (30.5 cm)
Steel Gauge	16 (1.52 mm)	16 (1.52 mm)	16 (1.52 mm)	16 (1.52 mm)
Steel Type	Stainless	Stainless	Stainless	Stainless
Refractory Lined	No	No	No	No
Stack Cap	Stainless Steel Screened	Stainless Steel Screened	Stainless Steel Screened	Stainless Steel Screened

BURNER TYPE, FUEL CONSUMPTION & ELECTRICAL

Note: A secondary burn chamber is an available option on all models. Use (as required by regulations) will change performance statistics.

Burner (LP and Natural Gas)				
Fuel	LP or Natural Gas	LP or Natural Gas	LP or Natural Gas	LP or Natural Gas
Ignition	Spark-Ignited Intermittent Pilot	Spark-Ignited Intermittent Pilot	Spark-Ignited Intermittent Pilot	Spark-Ignited Intermittent Pilot
Flame Safety	Electronic	Electronic	Electronic	Electronic
Burner (Fuel Oil)				
Fuel	Oil	Oil	Oil	Oil
Ignition	Continuous Spark	Continuous Spark	Continuous Spark	Continuous Spark
Flame Safety	CAD Cell	CAD Cell	CAD Cell	CAD Cell
Fuel Consumption				
LP (Liquid Propane)	3.0 gallons/hour (11.4 liters/hour)	3.0 gallons/hour (11.4 liters/hour)	5.8 gallons/hour (22.0 liters/hour)	7.2 gallons/hour (27.3 liters/hour)
Natural Gas	275.0 CFH (7.8 m ³ /hour)	275.0 CFH (7.8 m ³ /hour)	530.0 CFH (15.0 m ³ /hour)	660 CFH (18.7 m ³ /hour)
Fuel Oil	2.5 gallons/hour (9.5 liters/hour)	3.0 gallons/hour (13.2 liters/hour)	3.0 gallons/hour (13.2 liters/hour)	3.0 gallons/hour (13.2 liters/hour)
Electrical Service				
115V 60 Hz 20 amp	Yes	Yes	Yes	Yes
220 V 50 Hz 10 amp	Yes	Yes	Yes	Yes

1. Always install incinerators in accordance with local codes and ordinances, subject to regulatory agencies.
2. Stack test data is available from the distributor for permit application. If on-site testing is required, it is the responsibility of the purchaser and can be arranged through the distributor.
3. Outside installation is recommended with a simple metal roof or three-sided metal shelter, providing a minimum of four foot clearance from any combustible material.



Chore-Time Poultry Production Systems
 A Division of CTB, Inc.
 P.O. Box 2000 • Milford, IN 46542-2000
 Phone 574-658-4101 • Fax 574-658-4171
 poultry@choretime.com • www.choretime.com